

Mini-Com® S-Video Punchdown Module

- Terminates 24 and 22 AWG solid or stranded conductors
- Utilizes Category 5e unshielded twisted pair or higher network cable facilitating a common, easy, and cost effective cabling installation; only four of the eight network cable conductors need to be terminated per cable
- Includes wire retention cap
- Compatible with Mini-Com® Modular Patch Panels, Faceplates, and Surface Mount Boxes



Part Number	Part Description	No. of Module Spaces	Color‡	Std. Pkg. Qty.	Std. Ctn. Qty.
CJSVIW	Module supplied with one S-Video connector.	1	Off White	1	10

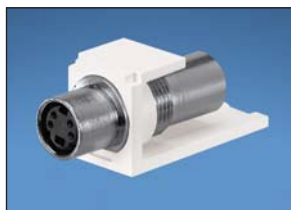
‡For other colors replace suffix IW (Off White) with EI (Electric Ivory), WH (White), IG (International Gray), or BL (Black).

Punchdown termination tool available on page B.87 of SA-NCCB51.

Optional punchdown base (AVPDB), available on page B.92 of SA-NCCB51.

Mini-Com® S-Video Pass-Through Module

- Supplied with one 4-pin mini DIN coupler
- Compatible with Mini-Com® Modular Patch Panels, Faceplates, and Surface Mount Boxes



Part Number	Part Description	No. of Module Spaces	Color‡	Std. Pkg. Qty.	Std. Ctn. Qty.
CMSVCIWY	Module supplied with one S-video pass-through coupler.	1	Off White	1	10

‡For other colors replace suffix IW (Off White) with EI (Electric Ivory), WH (White), IG (International Gray), or BL (Black).

Mini-Com® RCA 110 Punchdown Modules

- Terminate 24 and 22 AWG solid or stranded conductors
- Utilize Category 5e unshielded twisted pair or higher network cable facilitating a common, easy, and cost effective cabling installation; only two of the eight network cable conductors need to be terminated per cable
- Include wire retention cap
- Compatible with Mini-Com® Modular Patch Panels, Faceplates, and Surface Mount Boxes



CJRY

Part Number	Part Description	No. of Module Spaces	Insert Color	Color‡	Std. Pkg. Qty.	Std. Ctn. Qty.
CJRYIW	Module supplied with one RCA connector with yellow insert.	1	Yellow	Off White	1	10
CJRRIW	Module supplied with one RCA connector with red insert.	1	Red	Off White	1	10
CJRWIW	Module supplied with one RCA connector with white insert.	1	White	Off White	1	10

‡For other colors replace suffix IW (Off White) with EI (Electric Ivory), WH (White), IG (International Gray), or BL (Black).

Punchdown termination tool available on page B.87 of SA-NCCB51.

Optional punchdown base (AVPDB), available on page B.92 of SA-NCCB51.