

Panduit's Cable Cleat Products for Short Circuit Protection

Panduit® Pan-Steel® Self-Locking Cable Ties and the MS75 Metal Strapping System represent Panduit's cable cleat offering for robust cable management and short circuit protection up to 156kA. Available in a variety of sizes, these solutions ensure cables remain contained in the event of a short circuit occurrence, minimizing disruption and damage to personnel and property. Panduit's Cable Cleat Products for short circuit protection are designed to perform in a wide range of harsh environments, including industries such as Oil and Gas, Power Generation, Mining, and Shipbuilding.



Reduce Project Costs – Reduce Installation Time

- Up to **2X faster installation** versus competitive cable cleats
- Up to **50% reduction** in material cost
- Simple and intuitive design leads to **increased productivity**
- Compatible with a variety of ladder racks and cables

MS75 Technical Specifications and Testing Results

Type	6.1.3 Composite SDSS – Standard Duty Stainless Steel
Design Specification	IEC 61914:2015
Temperature for permanent application	-60°C to +60°C IEC 61914:2015 clause 6.2
Needle Flame Test	PASS IEC 61914:2015 clause 10.1
Lateral Load Test	PASS IEC 61914:2015 clause 9.3
Axial Load Test	PASS IEC 61914:2015 clause 9.4
Impact Resistance	PASS – Very Heavy IEC 61914:2015 clause 6.3, 6.3.5, 9.2
Material	316/316L Stainless Steel Cushion sleeve is Low Smoke Halogen Free (LSHF) TPE



MLT Technical Specifications and Testing Results

Type	6.1.3 Composite SDSS – Standard Duty Stainless Steel
Design Specification	IEC 61914:2015
Temperature for permanent application	-60°C to +60°C IEC 61914:2015 clause 6.2
Needle Flame Test	PASS IEC 61914:2015 clause 10.1
Lateral Load Test	PASS IEC 61914:2015 clause 9.3
Axial Load Test	PASS IEC 61914:2015 clause 9.4
Impact Resistance	PASS – Very Heavy IEC 61914:2015 clause 6.3, 6.3.5, 9.2
Material	316/316L Stainless Steel Cushion sleeve is Low Smoke Halogen Free (LSHF) TPE



Cable Cleat Products for Short Circuit Protection

To provide optimum performance, the use of cushion sleeve is recommended, and may be required in some applications.



Type 316, Self-Locking Cable Ties — MLT and MS75 Strapping Series

Part Number	Width (mm)	Max Peak Current (kA)	Cable Tie Spacing (mm)	Minimum Cable Outer Diameter (mm)
MLT#DEH15-Q316	12.7	45	300	27
MLT#DSH-Q316	15.9	70	300	39
MS#W75T30-Q6 (single loop)	19.1	85	300	40
MS#W75T30-Q6 (double loop)	19.1	156	300	43

represents maximum bundle diameter in inches

• MLT#DEH15-Q316 and MLT#DSH-Q316: 4.0, 6.0 and 8.0

• MS#W75T30-Q6 (single loop): 4.0, 6.0, 8.0, 10.0 and 12.0

• MS#W75T30-Q6 (double loop): 2.0, 3.0, 4.0, 5.0 and 6.0

When double looped, same part numbers are used as for single loop, but maximum bundle diameter is reduced in half.

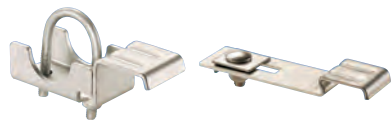
Metal Uniclip Brackets

- Allows Panduit stainless steel ties and straps to be installed on any style or design of cable tray; slotted or un-slotted
- Eliminate consideration of diagonal installations
- High resistance to lateral and axial movement



UCSQ1-V316

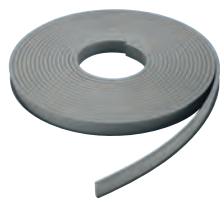
UCIB1-V316



UCRND1-V316

UCTH1-V316

Part Number	Material	Used with Pan-Steel® Ties	Description
UCSQ1-VC	Galvanized Steel	MLTS/LH/H/EH/EH15/SH, MLTC/H, MLTFC/S/LH/H/EH/SH, or MSW75	Metal Rung Bracket – Strut Type
UCRND1-VC			Metal Rung Bracket – Round
UCIB1-VC			Metal Rung Bracket – I-Beam
UCTH1-VC	Metal Rung Bracket – Top Hat		
UCSQ1-V316	Stainless Steel Type 316		Metal Rung Bracket – Strut Type
UCRND1-V316			Metal Rung Bracket – Round
UCIB1-V316		Metal Rung Bracket – I-Beam	
UCTH1-V316		Metal Rung Bracket – Top Hat	



PCS Cushion Sleeve

Part Number	Material	Used with Pan-Steel® Ties	Description
PCSLSH-B-CR	TPE Low Smoke, Halogen-Free, and Flame-Resistant	MLTEH/SH Ties/Banding/Strapping	Cushion Sleeving, Extra-Heavy or Super-Heavy, 100' (30.5m) Long x 1.05" (26.8 mm) Wide.

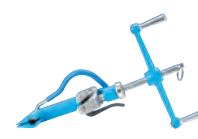
Installation Tools



RT2HT Hand Operated Tool for use with Extra-Heavy and Super-Heavy cross section Pan-Steel® Type MLT Ties.



PBTMT Battery Powered Installation Tool for use with Pan-Steel® Extra-Heavy and Super-Heavy Cross Section MLT Style Ties.



BT75SDT Hand Operated Installation Tool for use with MS75 strapping only.