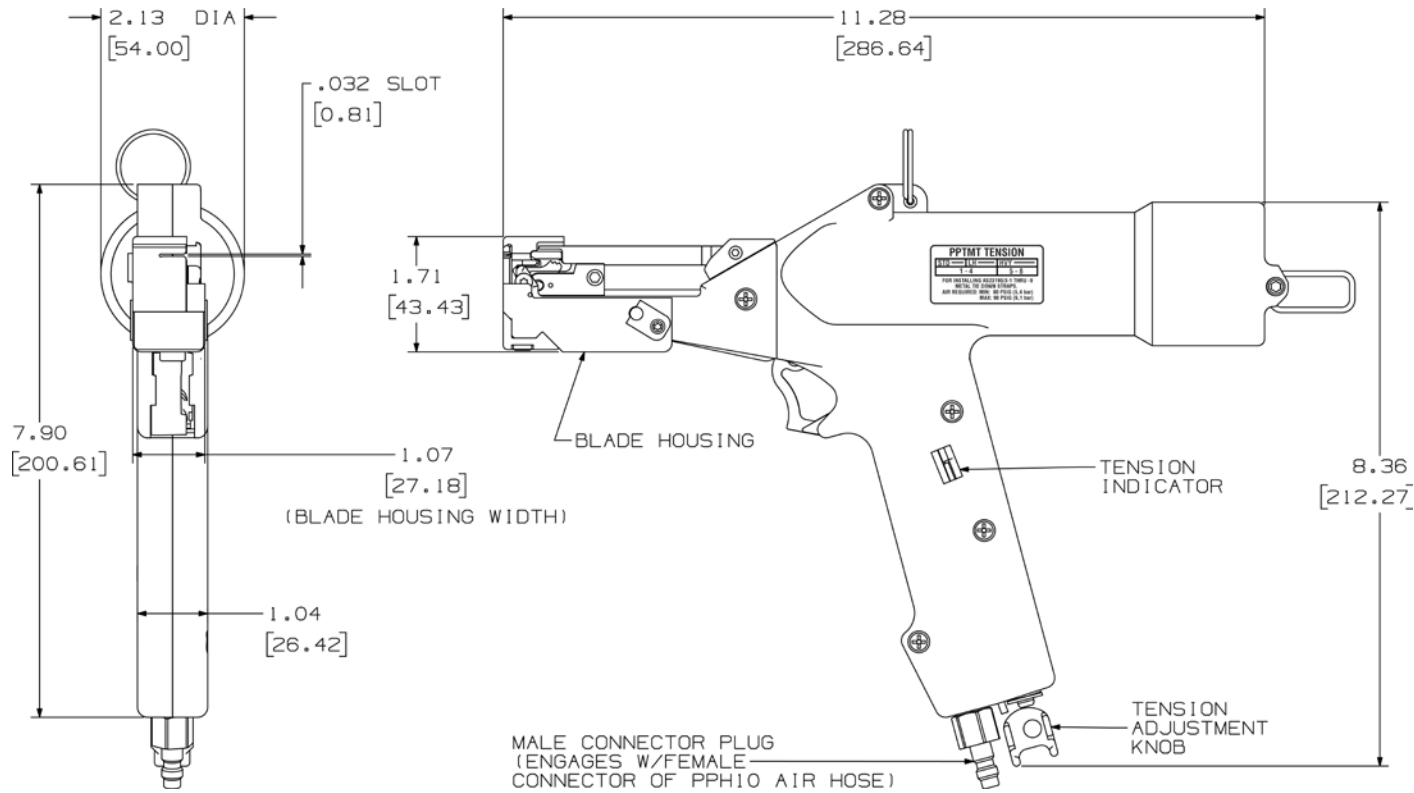


THIS COPY IS PROVIDED ON A RESTRICTED BASIS AND IS NOT TO BE USED IN ANY WAY DETRIMENTAL TO THE INTERESTS OF PANDUIT CORP.



**SPECIFICATIONS:**

PANDUIT TOOL NO: PPTMT  
 TOOL WEIGHT: 52 oz. (1474 gr.)

INSTALLS PANDUIT Pan-Steel MLT-S (STANDARD), MLT-LH (LIGHT-HEAVY); AND MLT-H (HEAVY) CROSS SECTION STAINLESS STEEL TIES (AS23190/3-1 TO -9).

THIS TOOL TIGHTENS STAINLESS STEEL TIES AND CUTS OFF EXCESS PORTION WHEN PRESET TENSION IS ATTAINED.

USE TOOL WITH PPH10 AIR HOSE.

OPERATE TOOL WITH FILTERED, NON-LUBRICATED AIR, REGULATED BETWEEN 80 AND 90 PSI.

**REFERENCE:**

KPPTMTB = BLADE REPLC. KIT  
 KPPTMTG = GRIPPER REPLC. KIT  
 TTLK3 = TENSION LOCKING KIT

DIMENSIONS SHOWN IN PARENTHESES ARE METRIC (MM), AND ARE FOR REFERENCE ONLY.

**PPTMT CUSTOMER DRAWING**

CUSTOMER DRAWING

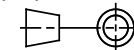
ITEM REVISION NAME:

**TM18423A01\_04**



UNLESS OTHERWISE SPECIFIED, DIMENSIONAL TOLERANCES ARE:

(.x) ± --- (.xxx) ± ---  
 (.xx) ± --- ANGLES ± ---



THIRD ANGLE PROJECTION

MATERIAL:

DRAWING NUMBER:  
 TM18423A01

REV	DATE	BY	CHK	APR	DESCRIPTION	ECN
04	2-09-17	BLR	JEH	JADE	UPDATE TOOL DIMENSIONING FOR CLARITY	12396
---	---	---	---	---	AND UPDATE FITTING	---
03	2-20-14	BLR	JEH	ABJ	REDRAWN: UPD TEMPLATE, BRANDING	4714

DRAWN BY: BLR	DATE: 11-01-13	CHK JEH	SCALE NONE	SHT 1 OF 1	SIZE A
------------------	-------------------	------------	---------------	------------	-----------