

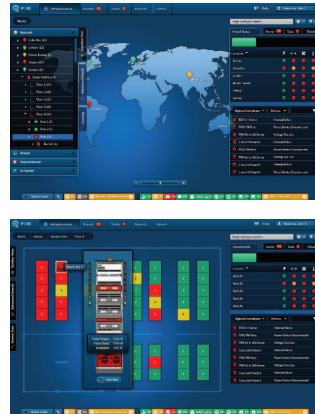
PIM™ Software Platform

PANDUIT™

SPECIFICATION SHEET

specifications

The Physical Infrastructure Manager™ (PIM™) Software Platform supports data center infrastructure management capabilities, including power and environmental monitoring, asset tracking and utilization, connectivity management, task management, and groups. The software supports modular deployment to enable growth and expansion of capabilities. The software supports remote management and access through a web browser, enabling global, regional, and local management of all functions. It supports the ability to generate pre-configured and custom reports. The software provides documentation in support of contractual service level agreements. It works with PanView iQ™ (PViQ™) System Hardware and Panduit® SmartZone™ gateways, as well as other third party intelligent appliances to support existing and new data center environments.



key features and benefits

Event manager	Provides automated documentation and real-time notification of changes in the physical infrastructure that helps reduce network downtime by quickly raising awareness and providing visibility into the nature and location of critical events
Floor plan	Provides an interactive top view of the data center enhanced with graphical representation of infrastructure capacity
Remote accessibility	Allows global network access via most web-browser applications for cost-effective network management and access to vital network information from anywhere in the world
Support service level agreements (SLAs)	Assists in facilitating contractual uptime service level requirements through automated processes and reduced network downtime
Capacity management	Speeds asset deployment process by determining multiple optimum placements for equipment; Stranded capacity management allows identification of unused capacity that can be retrieved, to save costs and extend the life of the data center
Mobile platform compatibility	Allows use of familiar mobile platform, increasing accessibility and convenience, allowing remote changes to be made from anywhere to improve productivity through quicker and more accurate record-keeping at cabinet locations

applications

Panduit's PIM™ Software Platform enables complete data center infrastructure management including monitoring of and management of critical physical layer resources, power usage, asset tracking and utilization, available space for expansion, environmental monitoring, and connectivity monitoring. This enables enterprises to assess and improve the overall reliability and efficiency of the infrastructure architecture, both in everyday operational environments and when executing on consolidation, virtualization, and automation initiatives.

The PIM™ Software Platform is a web application that maps and monitors these physical attributes at both the physical and logical layers of the network infrastructure.

With robust management and monitoring features, PIM™ Software helps to automate maintenance procedures and network documentation of the physical layer to enhance system reliability, security, capacity management, and planning. Remote management capabilities allow for global, regional, and local management, and monitoring for decreased mean time to repair and increased mean time between failure.

Integration with third-party applications through Application Programming Interfaces (APIs) allows PIM™ Software to augment existing network management systems and service desks for complete end-to-end management of network elements.

PIM™ Software Platform and Modules

Base functionality module:	PIM-BASE
Asset tracking and utilization module:	PIM-ASSET*
Connectivity module:	PIM-CONNECT*
Advanced dashboard and reports module:	PIM-DASHBOARD*
Power outlet unit monitoring:	PIM-POWER*
IBM^ Tivoli^ connector:	PIM-IBMINT*
Microsoft ^^ (SCOM) connector:	PIM-MSFTINT*
AyaNova* work order connector:	PIM-AYAINIT
BMC** Remedy work order connector:	PIM-BMCINT*
Maintenance, support, and warranty agreement:	PIM-CAMA

Contact Panduit Technical Support
by email: systemsupport@panduit.com
or by phone: 1-866-721-5302 (toll free)
Monday – Friday,
7:30 AM – 5:00 PM CST

*To order this module, add the appropriate letter to the end of the part number, based on the size of the installation: -S (<50 racks); -M (50-199 racks); -L (200-399 racks); -X (400+ racks). For example, the part number for the Connectivity Management Module for 250 racks is PIM-CONNECT-L.

^IBM and Tivoli are registered trademarks of IBM Corporation.

^^Microsoft is a registered trademark of Microsoft Corporation.

*AyaNova is a registered trademark of Ground Zero Tech-Works.

**BMC is a registered trademark of BMC Software, Inc.

PIM™ Software Platform



**Automated Discovery
Learn Mode**



Floor Plan



Voltage Trending

system requirements for server

Hardware	
CPU	3.0 GHz multi-core minimum 4 core
RAM	8 GB recommended
Hard Disk Space	1.3 GB for installation (10 GB for database expansion)
Software	
Operating System	Windows® Server 2008 R2 (64 bit) (English, Korean, Japanese, Chinese, Russian, Portuguese, and Spanish)
Browser	<ul style="list-style-type: none"> • Mozilla® Firefox® 25 to 30 • Google Chrome™ 31 to 36.0.1985.143 • IE10 on Windows Server 2008 R2 – Version 10.0.9200.17028 + Latest Update (KB2962872)
Database	<ul style="list-style-type: none"> • MS SQL® 2008 R2 Express with Advance Services (English) • MS SQL® 2008 R2 Enterprise Server 64-bit (English) • MS SQL® 2008 (SP3) Enterprise Edition 64-bit (English)

system requirements for client

Hardware	
CPU	2.9 GHZ dual core recommended
RAM	3.5 GB recommended
Computer Monitor	1280 × 1024 or higher
Handheld Device	<ul style="list-style-type: none"> • Apple® iPad 2, 16GB, iOS6 and 7 • Apple® iPad Mini, 16GB, iOS6 and 7 • Samsung® Galaxy Note 10.1, 16GB, Android™ 4.0
Handheld Scanner	<ul style="list-style-type: none"> • Socket Mobile CHS 7Pi • Motorola CS3070
Software	
Operating System	Windows® XP SP2, Windows® Vista, Windows 7 or 8 (English, Korean, Japanese, Chinese, Russian, Portuguese, and Spanish)
Browser	<ul style="list-style-type: none"> • Mozilla® Firefox® 25 to 30 • Google Chrome™ 31 to 36.0.1985.143 • IE10 on Windows Server 2008 R2 – Version 10.0.9200.17028 + Latest Update (KB2962872)
Handheld Device Operating System	<ul style="list-style-type: none"> • Mobile Safari 7 on iOS 7 • Chrome for Android 4.0

*Microsoft, Windows, Internet Explorer (IE) and MS SQL are registered trademarks of Microsoft Corporation in the United States and/or other countries.

**Java is a registered trademark of Oracle America, Inc.

***Apple is a registered trademark of Apple Inc.

****Samsung is a registered trademark of Samsung Electronics Co., Ltd.

^Mozilla and Firefox are registered trademarks of the Mozilla Foundation.

^^Android and Chrome are registered trademarks of Google Inc.

WORLDWIDE SUBSIDIARIES AND SALES OFFICES

PANDUIT CANADA
Markham, Ontario
cs-cdn@panduit.com
Phone: 800.777.3300

PANDUIT EUROPE LTD.
London, UK
cs-emea@panduit.com
Phone: 44.20.8601.7200

PANDUIT SINGAPORE PTE. LTD.
Republic of Singapore
cs-ap@panduit.com
Phone: 65.6305.7575

PANDUIT JAPAN
Tokyo, Japan
cs-japan@panduit.com
Phone: 81.3.6863.6000

PANDUIT LATIN AMERICA
Guadalajara, Mexico
cs-la@panduit.com
Phone: 52.33.3777.6000

PANDUIT AUSTRALIA PTY. LTD.
Victoria, Australia
cs-aus@panduit.com
Phone: 61.3.9794.9020

For a copy of Panduit product warranties, log on to www.panduit.com/warranty

For more information

Visit us at www.panduit.com

Contact Customer Service by email: cs@panduit.com
or by phone: 800.777.3300

PANDUIT™

©2014 Panduit Corp.
ALL RIGHTS RESERVED.

PVSP24--WW-ENG

10/2014